

b'Using b-commerce

By Laurence Guiney

It is Saturday morning; you have just finished your eighth cup of “java” and are finally waking up. You get a call from your end user and they want to know why they are getting an error message that says “FLEXIm error: -4,132. Licensed number of users already reached.” You let them know that they have exceeded the number of users on their license (see, they should have listened to you and bought those additional 10 users). You then tell them not to worry because you can order these extra users in a matter of minutes using the BASIS b-commerce™ application.

Just over three years ago, BASIS launched its b-commerce Web site. Originally written in Visual PRO/5®, the b-commerce application now runs purely in BBj®. With b-commerce, customers can order new licenses, upgrade licenses, add users to an existing license, or obtain information about a specific license - such as revision, user count, or authorization number. Customers can also use b-commerce to obtain pricing for end user quotations. All of these features are available 24x7, 365 days a year at www.poweredbybbj.com.

After going to the b-commerce Web site, the first page appears asking for confirmation of the Java™ Run-time Environment (JRE) version installed on your machine. Using b-commerce requires a JRE version 1.4.2 or higher. To download the latest JRE, BASIS provides a link to the Sun Microsystems Web site.

The b-commerce login screen, as shown in **Figure 1**, asks for the BASIS **Customer Number** and **Password**. The top right-hand corner of every screen in the application includes a link to the b-commerce **Help** system. After logging in, the main menu appears as shown in **Figure 2**. From this screen, you can purchase new licenses (**New Item** button), modify existing licenses (**Single License** button), or upgrade your existing license to BBj (**Upgrade to BBj** button). You can also modify your account by clicking the **Account Information** button, or you can proceed directly to the shopping cart to purchase previously entered line items.

continued...



Figure 1. b-commerce Login Screen.



Figure 2. b-commerce Main Menu.



Figure 3. Item Detail Screen.



Figure 4. Existing License Screen.

Figure 3 shows the screen for ordering new items. This screen provides generalized access to all of the functionality contained within the b-commerce application. The various functions allow the modification of an existing license, purchasing a new product license, viewing the shopping cart's contents, access to account information for the account logged on, and logging out of the system.

After clicking on the drop down arrow on the right side of the product list box, simply select a BASIS License for BBj or PRO/5® Rev. 4, or select PRO/5 Data Server®, ODBC Driver, PRO/5, or Visual PRO/5 for earlier revisions. The next option, **Platform**, allows the customer to select their appropriate operating system. Selecting the **O/S Level** determines the options available for the appropriate operating system version. The **Revision** option refers to the revision of the BASIS product selected.

Next, select the number of users per license in the **Users** box and the number of licenses with this configuration in the **Quantity** box. There is also the option to select a SAM Plan renewal date if you want one other than the date of purchase, which the system uses as the default.

The **Reference** field is for entering a purchase order number, which allows the tracking of an order by a unique identifier. After confirming the selection of the correct items, add the items to the shopping cart by clicking the **Add to Cart** button.

continued...

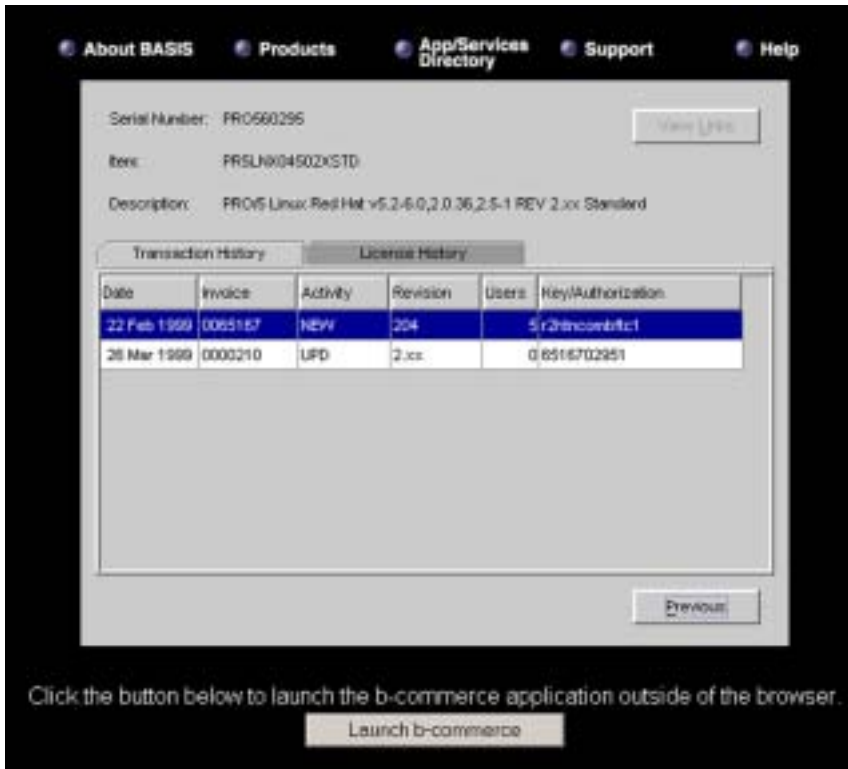


Figure 5. History Screen.

Modifying a single license or upgrading a license to BBJ works much in the same way, with the exception that you must enter the serial number of the license that you want to modify. The **Scan Licenses** button provides a way to search for an existing serial number. As shown in **Figure 4**, using this button also provides revision numbers and the number of users on the license.

The **Modify License** button allows modifications to the configuration of the serial number. To view a license's historical information, select the **View History** button as shown in **Figure 5**.

Figure 6 shows the **Shopping Cart** screen which allows you to add new licenses, modify existing licenses, or simply verify the order. To make changes to the order, double click on the item in question and the b-commerce application goes back to the license modification screen enabling you to make any necessary changes. To e-mail the contents of the shopping cart to yourself at the address provided in the **Account Information** section, simply click on the **E-mail** button.

continued...

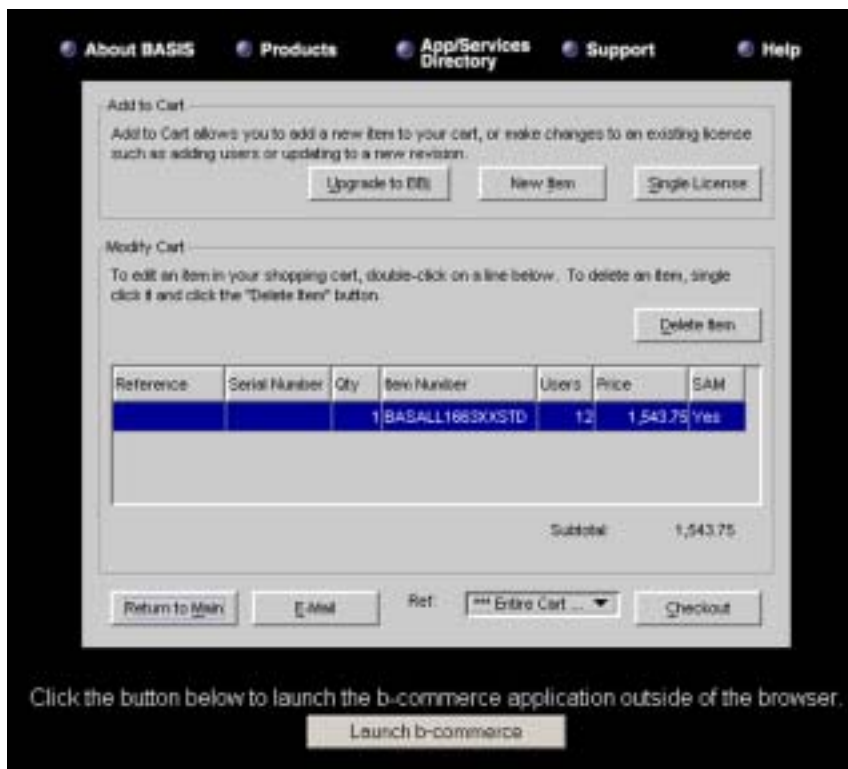


Figure 6. Shopping Cart.



Figure 7. BASIS Product CD and Checkout Screen.

After completing the changes and approving all line items, proceed to the checkout screen by clicking on the **Checkout** button. **Figure 7** shows the screen containing the option to select whether to receive a BASIS Product CD. Enter the quantity of CDs and confirm the shipping information located in the lower right hand corner.

To change the shipping address, just click on either the **U.S.** or **International** button. The text boxes in the upper right hand corner allow you to select the e-mail addresses or fax numbers to send the license authorization form. After completing these items, click the **Next** button.

The final purchasing step occurs on the payment screen, as shown in **Figure 8**. This screen displays the total amount due, including all applicable tax, shipping, and handling charges. The b-commerce system accepts VISA, MasterCard, or American Express, and extends credit for customers with pre-approved Net terms status.



Figure 8. Payment Screen.

After selecting the payment method and entering the payment information, click the **Buy Now** button. After processing the order, the b-commerce application displays the order information and mails an order confirmation to the default e-mail address listed in **Account Information**.

Using the BASIS b-commerce Web site, customers save both time and money by having 24x7 access to information regarding product licensing, serial numbers, and pricing. b-commerce provides an efficient way to purchase new licenses and upgrade or add users to an existing license. All of this is now only a few clicks away at anytime of night or day!

Always remember, the BASIS Sales Team is happy to assist you with placing an order on the BASIS b-commerce Web site www.poweredbybj.com. 